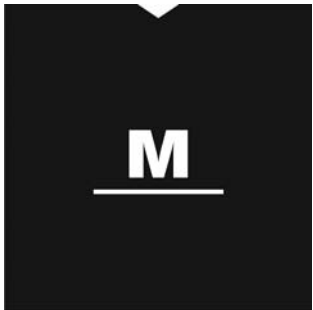




PANEL BASICS COORDINATES



Panel Fabric



MAYERFABRICS



BASIC

FRESCO



FAB9238  
Earth



FAB9246  
Earth



FAB9236  
Parchment



FAB9245  
Taupe



FAB9231  
Pumice



FAB9250  
Parchment



FAB9254  
Sand



FAB9243  
Sand



FAB9232  
Caramel



FAB9237  
Mesa



FAB9251  
Raffia



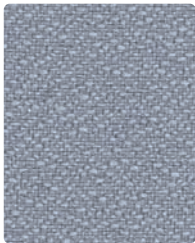
FAB9247  
Patina



FAB9233  
Patina



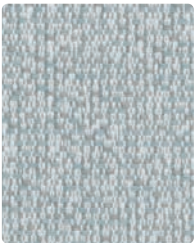
FAB9240  
Blue Mist



FAB9234  
Denim



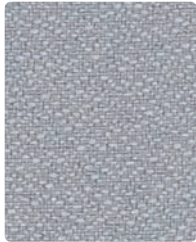
FAB9252  
Blue Mist



FAB9248  
Sky



FAB9244  
Fog



FAB9241  
Shadow



FAB9235  
Ebony



FAB9253  
Fog



FAB9249  
Pewter

Items in red are not available on CLASSIC XXI Systems Panels

GRADE A



# STRATA



FAB9260  
Ecuru



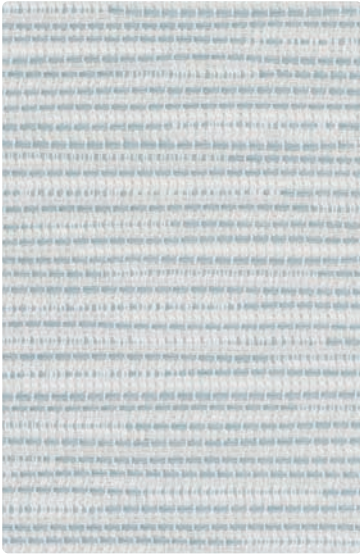
FAB9263  
Raffia



FAB9261  
Cliff



FAB9256  
Patina



FAB9262  
Cerulean



FAB9258  
Horizon



FAB9264  
Pumice



FAB9259  
Zinc



FAB9255  
Bark

Items in red are not available on CLASSIC XXI Systems Panels

GRADE A






TECHNICAL INFORMATION

GRADE A

Panel Basics

\* ACT® Registered Certification Marks

Pattern 66"	Content		Weight/ Linear Yd	Pattern Repeat	Finish	Light- Fastness 	Flammability 	Cleaning Code
BASIC	100% Recycled Polyester (65% Pre-/35% Post-Consumer)	Yes	7.8 oz.	None	None	40 hours	ASTM E84 Class 1 or A (Unadhered) Cal. 117-E	WS
FRESCO Directional	65% Post-Consumer Recycled Polyester, 35% Polyester	Yes	10 oz.	None	None	40 hours	ASTM E84 Class 1 or A (Unadhered) Cal. 117-E	WS
STRATA Directional	65% Post-Consumer Recycled Polyester, 35% Polyester	Yes	10 oz.	7" H 8.75" V Non-Matching	None	40 hours	ASTM E84 Class 1 or A (Unadhered) Cal. 117-E	WS

REDUCED ENVIRONMENTAL IMPACT

Recycled Content



GREENGUARD Indoor Air Quality Certification requires products to meet some of the world's toughest chemical emissions standards. GREENGUARD Children & Schools Certification requires those products to meet or exceed additional criteria, including CA Section 01350, to account for the unique health sensitivities of children.

REDUCED ENVIRONMENTAL IMPACT - Basic




CLEANING INFORMATION

WS: Water/Solvent Cleaner – Spot clean, with a mild solvent, an upholstery shampoo, or the foam from a mild detergent. When using a solvent or dry cleaning product, follow instructions carefully and clean only in a well-ventilated room. Avoid any product that contains carbon tetrachloride or other toxic materials. With either method, pretest a small area before proceeding.

For detailed care and cleaning information for each pattern, please refer to the Mayer Fabrics website or contact customer service.

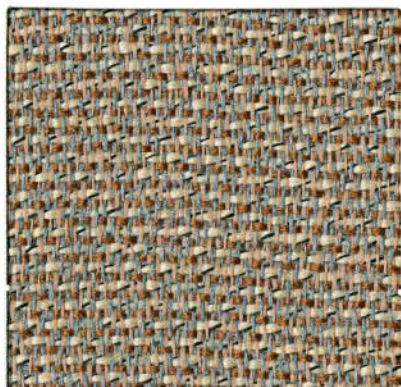
ADDITIONAL INFORMATION

**Custom Capabilities:** All patterns can be custom colored. Minimum yardage applies.  
**Memo Samples:** Please keep this card intact. Individual memo samples can be ordered on our website or by contacting customer service.  
**Color matching:** Mayer Fabrics always attempts to ship a satisfactory commercial match. Because of industry standard dye lot variation, colors may not match exactly.  
**Specifications:** Specifications are correct at the time of printing. Additional specifications are available on our website.  
**For information or assistance with products or services, call us at 800.428.4415 or refer to our website, www.mayerfabrics.com.**

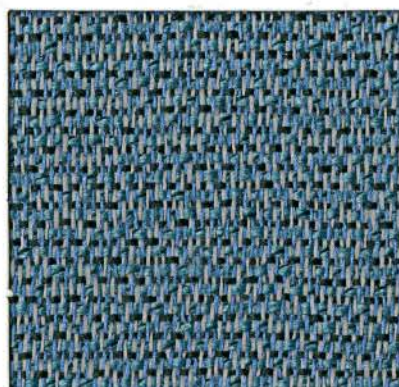
 This 100% polyester panel fabric is included in the Underwriters Laboratory Fabric Recognition Program. Additional testing of the U.L. recognized component fabric is not required on approved panels from participating manufacturers.



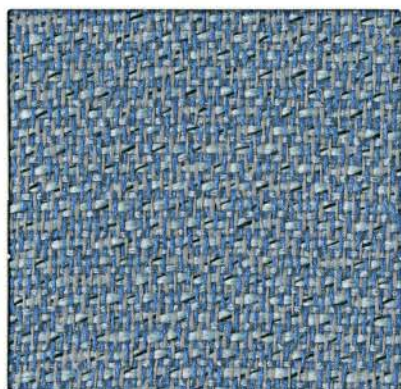




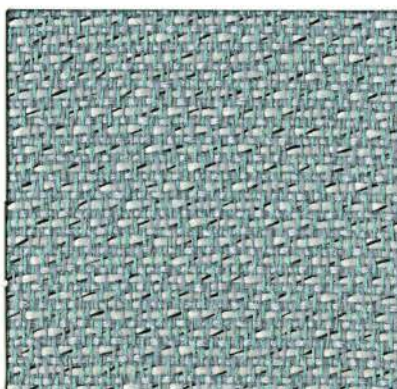
FAB6600 Bryce Canyon



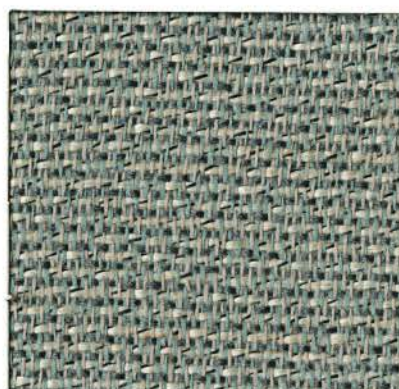
FAB6602 Huron



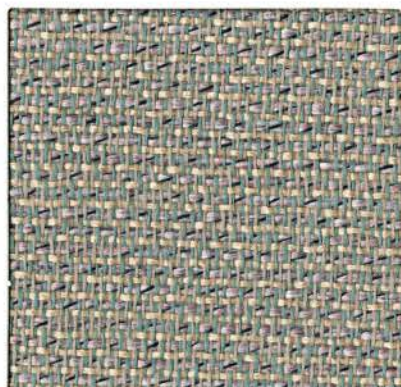
FAB9470 Balboa



FAB9468 Green Bay



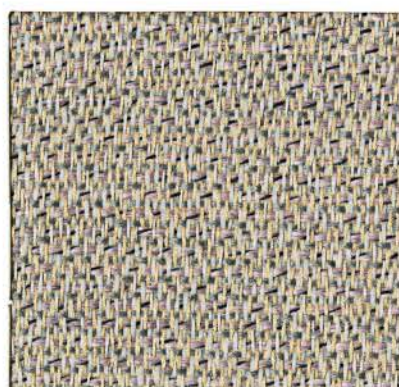
FAB6603 Padre



FAB9463 Huntington



FAB9462 Newport



FAB9461 Smith Point



FAB9460 Hermosa



FAB9458 Cape May



FAB6604 Heartland



# COPA Grade A



## TECHNICAL INFORMATION

Content: 55% Post Industrial Recycled Polyester,  
45% Post Consumer Recycled Polyester  
Width: 66"  
Weight: 11.5 oz./linear yard

Backing: None  
Finish: None  
Cleanability: WS

Approx. Repeat: None  
Directional: Yes  
Shown Railroaded: No

## PERFORMANCE

### Test Method

### Results

Surface Abrasion: Heavy Duty **A**\*

ASTM-D-3597 Wyzenbeek Test

Exceeds 15,000 Double Rubs

Breaking Strength: **☆**\*

ASTM-D-5034

Exceeds Warp 100 lbs/Fill 125 lbs

Colorfastness to Crocking: **●**\*

AATCC-8

Dry: Passes Class 4 min/Wet: Passes Class 3 min

Colorfastness to Light: **☀**\*

AATCC-16

Exceeds 40 Hours - Class 4 min

Class in the colorfastness requirements is based on a numerical scale of 5 for negligible or no color transfer to 1 for very severe color change or color transfer.

## FLAMMABILITY **☼**\*

California Technical Bulletin 117, Section E (Equivalent to BIFMA) Passes  
ASTM E84 Passes

## CLEANING INFORMATION

WS: Water/Solvent Cleaner – Spot clean, with a mild solvent, an upholstery shampoo, or the foam from a mild detergent. When using a solvent or dry cleaning product, follow instructions carefully and clean only in a well-ventilated room. Avoid any product that contains carbon tetrachloride or other toxic materials. With either method, pretest a small area before proceeding.

For detailed specifications, care and cleaning information, please refer to the Mayer Fabrics web site at [www.mayerfabrics.com](http://www.mayerfabrics.com).

Please keep this card intact. Individual memo samples are available. Please contact Mayer Fabrics or refer to the Mayer Fabrics web site. Color matching: Mayer will always attempt to ship a satisfactory commercial match. Because of industry standard dye lot variation, colors may not match exactly. Specifications are correct at time of printing. Current specifications are available on the Mayer Fabrics web site. [www.mayerfabrics.com](http://www.mayerfabrics.com)

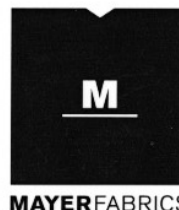
\*ACT\* Registered Certification Marks



Terratex® is a registered trademark of True Textiles Inc. and designates fabrics that are made from 100% recycled or compostable materials using increasingly sustainable manufacturing practices to produce a high quality product that is recyclable at the end of its useful life.



This 100% polyester panel fabric is included in the Underwriters Laboratory Fabric Recognition Program. Additional testing of this U.L. recognized component fabric is not required on approved panels from participating manufacturers.





# UNICOR OFFICE FURNITURE GROUP



**Eco-System®**

**EQUAL**

---

Panel Fabric





FAB1546 Cherry Neutral



FAB9474 Bone



FAB1505 Pearl



FAB1525 Opal



FAB1555 Buff



FAB1515 Quartz



FAB1530 Wheat



FAB1556 Vanilla Neutral



FAB9471 Desert Sand



FAB9478 Dune



FAB9475 Straw



FAB9472 Cement Mix



FAB9479 Stream



FAB1544 Claret Accent



FAB9473 Terra



FAB1545 Apricot Neutral



FAB9480 Leaf



FAB1549 Deep Burgundy



FAB1558 Cinnabar



FAB1552 Pumice



FAB9481 Light Moss





FAB1502 Eucalyptus



FAB1511 Blue Neutral



FAB1521 Lavender Neutral



FAB1510 Silver Papier



FAB1501 Verte Papier



FAB1512 Crystal Blue



FAB1516 Bleu Papier



FAB1506 Green Neutral



FAB1522 Amethyst



FAB1526 Silver Neutral



FAB1513 Bayberry



FAB1531 Grey Mix



FAB1508 Aquamarine



FAB1518 Wedgewood



FAB1528 Baltic



FAB1533 Medium Grey



FAB9482 Blue Spruce



FAB1514 Ultramarine



FAB1524 Blue Plum



FAB1534 Black



# EQUAL Grade A



## TECHNICAL INFORMATION

Content: 100% Post Consumer Recycled Polyester  
Width: 66"  
Weight: 16 oz./linear yard

Backing: None  
Finish: None  
Cleanability: WS

Approx. Repeat: None  
Directional: No  
Shown Railroaded: No

## PERFORMANCE

	Test Method	Results
Surface Abrasion: Heavy Duty  *	ASTM-D-3597	Exceeds 15,000 Double Rubs
Breaking Strength: Tensile  *	ASTM-D-5034	Exceeds Warp 150 lbs min/Fill 150 lbs min
Colorfastness to Crocking:  *	AATCC-8	Dry: Passes Class 4 min/Wet: Passes Class 3 min
Colorfastness to Light:  *	AATCC-16 Option 3	Exceeds 40 Hours - Class 5

Class in the colorfastness requirements is based on a numerical scale of 5 for negligible or no color transfer to 1 for very severe color change or color transfer.

## FLAMMABILITY \*

California Technical Bulletin 117, Section E (Equivalent to BIFMA) Passes  
ASTM E84 Passes

## CLEANING INFORMATION

WS: Water/Solvent Cleaner – Spot clean, with a mild solvent, an upholstery shampoo, or the foam from a mild detergent. When using a solvent or dry cleaning product, follow instructions carefully and clean only in a well-ventilated room. Avoid any product that contains carbon tetrachloride or other toxic materials. With either method, pretest a small area before proceeding.

For detailed specifications, care and cleaning information, please refer to the Mayer Fabrics web site at [www.mayerfabrics.com](http://www.mayerfabrics.com).

Please keep this card intact. Individual memo samples are available. Please contact Mayer Fabrics or refer to the Mayer Fabrics web site. Color matching: Mayer will always attempt to ship a satisfactory commercial match. Because of industry standard dye lot variation, colors may not match exactly. Specifications are correct at time of printing. Current specifications are available on the Mayer Fabrics web site. [www.mayerfabrics.com](http://www.mayerfabrics.com)

\*ACT\* Registered Certification Marks



Terratec® is a registered trademark of True Textiles Inc. and designates fabrics that are made from 100% recycled or compostable materials using increasingly sustainable manufacturing practices to produce a high quality product that is recyclable at the end of its useful life.



This 100% polyester panel fabric is included in the Underwriters Laboratory Fabric Recognition Program. Additional testing of this U.L. recognized component fabric is not required on approved panels from participating manufacturers.







166-007 Quartz  
FAB3312



166-002 Straw  
FAB3313



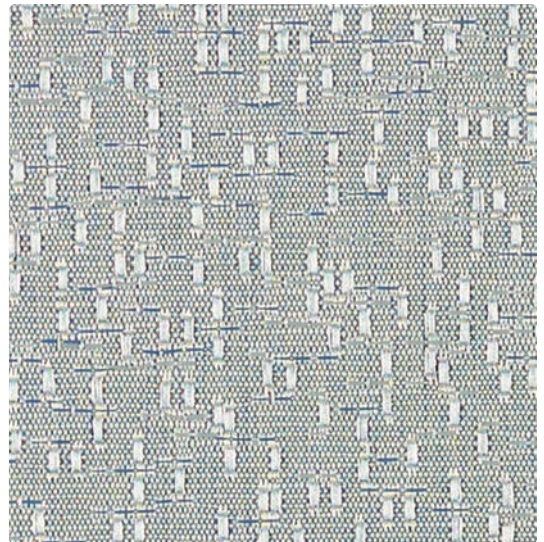
166-017 Sand  
FAB3314



166-003 Pistachio  
FAB3315



166-006 Zinc  
FAB3316



166-004 Sky  
FAB3317

**Application**  
Panel/Wall

**Content**  
100% Recycled Polyester

**Width**  
66 inches

**Finish**  
None

**Reduced Environmental Impact**  
GREENGUARD Gold Certified



**Eco System®**  
Sustainable. Attainable at Mayer Fabrics.



TECHNICAL INFORMATION

Content: 100% Recycled Polyester (65% Pre-/35% Post-Consumer)		
Width: 66"	Weight: 10.208 oz./linear yard	
Backing: None	Finish: None	
Approx. Repeat: 8.25" H, 0" V Non-Matching	Directional: Yes	Railroaded: No

PERFORMANCE

Colorfastness to Crocking AATCC-8	Results
Colorfastness to Light AATCC-16	Dry: Class 4 min / Wet: Class 3 min
	Class 4 min at 40 hours

FLAMMABILITY

ASTM E84 (Unadhered) Class 1 or A
California Technical Bulletin 117-2013
NFPA 260/UFAC Class 1

REDUCED ENVIRONMENTAL IMPACT

This product is GREENGUARD Gold Certified for low chemical and particle emissions to UL standard UL 2818 and may contribute to LEED certification. For complete information visit [mayerfabrics.com](http://mayerfabrics.com) and [UL.com/gg](http://UL.com/gg).

Eco System®  
Sustainable. Attainable at Mayer Fabrics.

The Eco System icon indicates 100% recycled content.


CLEANING INFORMATION

WS: Water/Solvent Cleaner

ADDITIONAL INFORMATION

**Custom Capabilities:** All patterns can be custom colored. Minimum yardage applies.  
**Digital Swatch Card Color Matching:** Due to color variations on different monitors and color printers, actual swatch colors may vary slightly. Please request a memo sample from Mayer Fabrics to ensure proper color representation.  
**Specifications:** Specifications are correct at the time of printing. Current specifications are available on our website.

\*  
This fabric meets or exceeds these ACT performance guidelines.  
\*Certification Marks owned by ACT\*

 This 100% polyester fabric is included in the Underwriter's Laboratory Fabric Recognition Program. Additional testing of this U.L. recognized component is not required on approved panels from participating manufacturers.







166-007 Quartz  
FAB3312



166-002 Straw  
FAB3313



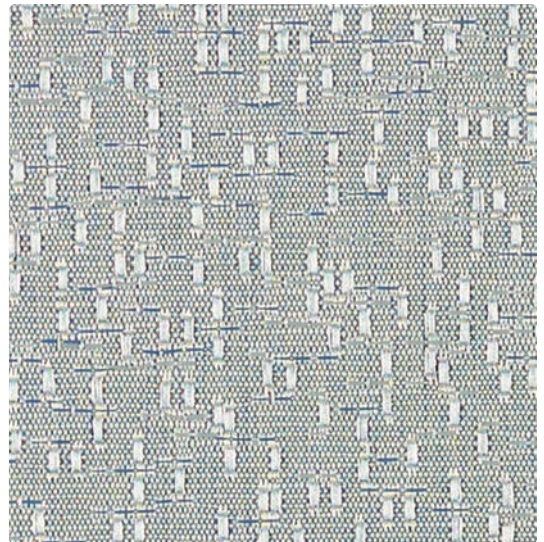
166-017 Sand  
FAB3314



166-003 Pistachio  
FAB3315



166-006 Zinc  
FAB3316



166-004 Sky  
FAB3317

**Application**  
Panel/Wall

**Content**  
100% Recycled Polyester

**Width**  
66 inches

**Finish**  
None

**Reduced Environmental Impact**  
GREENGUARD Gold Certified



**Eco System®**  
Sustainable. Attainable at Mayer Fabrics.



TECHNICAL INFORMATION

Content: 100% Recycled Polyester (65% Pre-/35% Post-Consumer)		
Width: 66"	Weight: 10.208 oz./linear yard	
Backing: None	Finish: None	
Approx. Repeat: 8.25" H, 0" V Non-Matching	Directional: Yes	Railroaded: No

PERFORMANCE

Colorfastness to Crocking AATCC-8	Results
Colorfastness to Light AATCC-16	Dry: Class 4 min / Wet: Class 3 min
	Class 4 min at 40 hours

FLAMMABILITY

ASTM E84 (Unadhered) Class 1 or A
California Technical Bulletin 117-2013
NFPA 260/UFAC Class 1

REDUCED ENVIRONMENTAL IMPACT

This product is GREENGUARD Gold Certified for low chemical and particle emissions to UL standard UL 2818 and may contribute to LEED certification. For complete information visit [mayerfabrics.com](http://mayerfabrics.com) and [UL.com/gg](http://UL.com/gg).

Eco System®  
Sustainable. Attainable at Mayer Fabrics.

The Eco System icon  
indicates 100% recycled content.


CLEANING INFORMATION

WS: Water/Solvent Cleaner

ADDITIONAL INFORMATION

**Custom Capabilities:** All patterns can be custom colored. Minimum yardage applies.  
**Digital Swatch Card Color Matching:** Due to color variations on different monitors and color printers, actual swatch colors may vary slightly. Please request a memo sample from Mayer Fabrics to ensure proper color representation.  
**Specifications:** Specifications are correct at the time of printing. Current specifications are available on our website.

\*  
This fabric meets or exceeds  
these ACT performance guidelines.  
\*Certification Marks owned by ACT\*



This 100% polyester fabric is included in the Underwriter's Laboratory Fabric Recognition Program.  
Additional testing of this U.L. recognized component is not required on approved panels from participating manufacturers.







166-007 Quartz  
FAB3312



166-002 Straw  
FAB3313



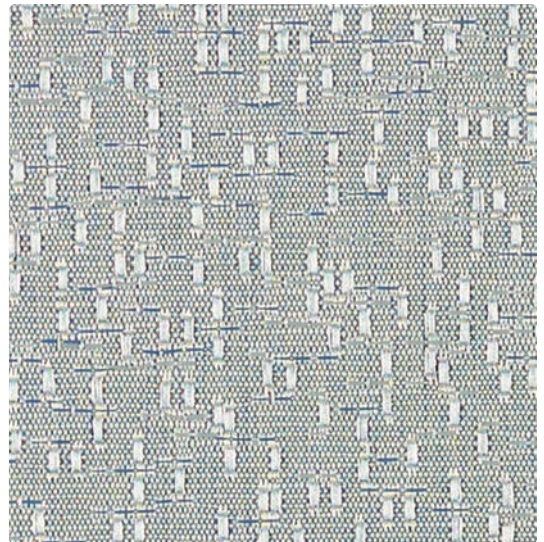
166-017 Sand  
FAB3314



166-003 Pistachio  
FAB3315



166-006 Zinc  
FAB3316



166-004 Sky  
FAB3317

**Application**  
Panel/Wall

**Content**  
100% Recycled Polyester

**Width**  
66 inches

**Finish**  
None

**Reduced Environmental Impact**  
GREENGUARD Gold Certified



**Eco System®**  
Sustainable. Attainable at Mayer Fabrics.



TECHNICAL INFORMATION

Content: 100% Recycled Polyester (65% Pre-/35% Post-Consumer)		
Width: 66"	Weight: 10.208 oz./linear yard	
Backing: None	Finish: None	
Approx. Repeat: 8.25" H, 0" V Non-Matching	Directional: Yes	Railroaded: No

PERFORMANCE

Colorfastness to Crocking AATCC-8	Results
Colorfastness to Light AATCC-16	Dry: Class 4 min / Wet: Class 3 min
	Class 4 min at 40 hours

FLAMMABILITY

ASTM E84 (Unadhered) Class 1 or A  
California Technical Bulletin 117-2013  
NFPA 260/UFAC Class 1

REDUCED ENVIRONMENTAL IMPACT

This product is GREENGUARD Gold Certified for low chemical and particle emissions to UL standard UL 2818 and may contribute to LEED certification. For complete information visit [mayerfabrics.com](http://mayerfabrics.com) and [UL.com/gg](http://UL.com/gg).



Eco System®  
Sustainable. Attainable at Mayer Fabrics.

The Eco System icon  
indicates 100% recycled content.

CLEANING INFORMATION

WS: Water/Solvent Cleaner

ADDITIONAL INFORMATION

**Custom Capabilities:** All patterns can be custom colored. Minimum yardage applies.  
**Digital Swatch Card Color Matching:** Due to color variations on different monitors and color printers, actual swatch colors may vary slightly. Please request a memo sample from Mayer Fabrics to ensure proper color representation.  
**Specifications:** Specifications are correct at the time of printing. Current specifications are available on our website.

  
This fabric meets or exceeds  
these ACT performance guidelines.  
\*Certification Marks owned by ACT\*

 This 100% polyester fabric is included in the Underwriter's Laboratory Fabric Recognition Program.  
Additional testing of this U.L. recognized component is not required on approved panels from participating manufacturers.







167-016 **Cloud**  
FAB3306



167-007 **Parchment**  
FAB3305



167-003 **Seafoam**  
FAB3307



167-009 **Sepia**  
FAB3308



167-000 **Malt**  
FAB3390



167-006 **Zinc**  
FAB3310



167-004 **Blue Mist**  
FAB3311

Application  
Panel/Wall

Content  
75% Recycled Polyester,  
25% Polyester

Width  
66 inches

Finish  
None

Reduced Environmental Impact  
GREENGUARD Gold Certified



TECHNICAL INFORMATION

Content: 75% Recycled Polyester (42% Pre-/33% Post-Consumer), 25% Polyester		
Width: 66"	Weight: 11.232 oz./linear yard	
Backing: None	Finish: None	
Approx. Repeat: 8.5" H, 10.938" V Non-Matching	Directional: Yes	Railroaded: No

PERFORMANCE

Colorfastness to Crocking AATCC-8	Results
Colorfastness to Light AATCC-16	Dry: Class 4 min / Wet: Class 3 min
	Class 4 min at 40 hours

FLAMMABILITY

ASTM E84 (Unadhered) Class 1 or A
California Technical Bulletin 117-2013
NFPA 260/UFAC Class 1

REDUCED ENVIRONMENTAL IMPACT

This product is GREENGUARD Gold Certified for low chemical and particle emissions to UL standard UL 2818 and may contribute to LEED certification. For complete information visit [mayerfabrics.com](http://mayerfabrics.com) and [UL.com/gg](http://UL.com/gg).

CLEANING INFORMATION

WS: Water/Solvent Cleaner
---------------------------

ADDITIONAL INFORMATION

**Custom Capabilities:** All patterns can be custom colored. Minimum yardage applies.  
**Digital Swatch Card Color Matching:** Due to color variations on different monitors and color printers, actual swatch colors may vary slightly. Please request a memo sample from Mayer Fabrics to ensure proper color representation.  
**Specifications:** Specifications are correct at the time of printing. Current specifications are available on our website.



This fabric meets or exceeds these ACT performance guidelines.  
\*Certification Marks owned by ACT\*

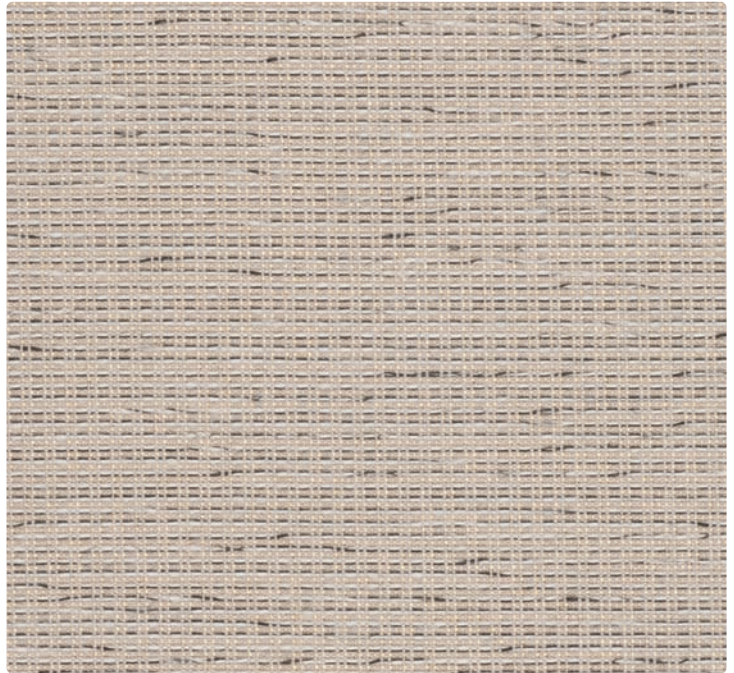
 This 100% polyester fabric is included in the Underwriter's Laboratory Fabric Recognition Program. Additional testing of this U.L. recognized component is not required on approved panels from participating manufacturers.







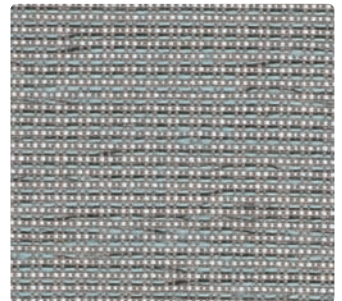
FAB5112 Straw



FAB8068 Gravel



FAB8065 Shadow



FAB5113 Aquamarine



FAB8067 Gray Mix



FAB8064 Spice



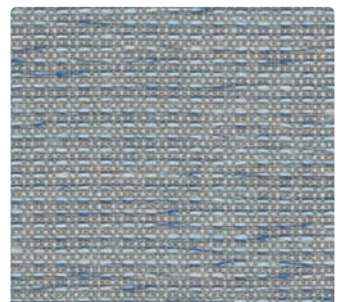
FAB8066 Pewter



FAB8062 Charcoal



FAB8060 Fog



FAB8061 Denim

Application  
Panel

Content  
100% Recycled Polyester

Width  
66 inches

Finish  
None

Reduced Environmental Impact  
Recycled Content





**TECHNICAL INFORMATION**

Content: **100% Recycled Polyester**  
(73% Pre-/27% Post-Consumer)

Width: 66"  
Weight: 11.3 oz./linear yard

Backing: None  
Finish: None  
Cleaning Code: WS

Visual Repeat: Non-Matching  
Directional: Yes  
Railroaded: No

**PERFORMANCE** (\*ACT\* Registered Certification Marks)

## Test Method

## Results

Breaking Strength: ✂ \*

ASTM-D-5034

Warp 180 lbs min / Fill 160 lbs min

Colorfastness to Crocking: ☘ \*

AATCC-8

Dry: Class 4 min / Wet: Class 3 min

Colorfastness to Light: ☀ \*

AATCC-16 Option 3

Class 4 min at 40 hours

Class in the colorfastness requirements is based on a numerical scale of 5 for negligible or no color transfer to 1 for very severe color change or color transfer.

**FLAMMABILITY** 🔥 \*

ASTM E84 Class 1 or A

Passes

**REDUCED ENVIRONMENTAL IMPACT****Recycled Content**

GREENGUARD Indoor Air Quality Certification requires products to meet some of the world's toughest chemical emissions standards. GREENGUARD Children & Schools Certification requires those products to meet or exceed additional criteria, including CA Section 01350, to account for the unique health sensitivities of children.



Eco System®

Sustainable. Attainable at Mayer Fabrics

**CLEANING INFORMATION**

WS: Water/Solvent Cleaner – Spot clean, with a mild solvent, an upholstery shampoo, or the foam from a mild detergent. When using a solvent or dry cleaning product, follow instructions carefully and clean only in a well-ventilated room. Avoid any product that contains carbon tetrachloride or other toxic materials. With either method, pretest a small area before proceeding.

**ADDITIONAL INFORMATION**

**Custom Capabilities:** All patterns can be custom colored. Minimum yardage applies.

**Memo Samples:** Please keep this card intact. Individual memo samples can be ordered on our website or by contacting customer service.

**Color Matching:** Mayer Fabrics always attempts to ship a satisfactory commercial match. Because of industry standard dye lot variation, colors may not match exactly.

**Specifications:** Specifications are correct at the time of printing. Current specifications are available on our website.

**For information or assistance with products or services, call us at 800.428.4415 or refer to our website, [www.mayerfabrics.com](http://www.mayerfabrics.com).**



This 100% polyester panel fabric is included in the Underwriters Laboratory Fabric Recognition Program. Additional testing of this U.L. recognized component fabric is not required on approved panels from participating manufacturers.







FAB5830 Parchment



FAB5834 Quartz



FAB5829 Pewter



FAB5831 Raffia



FAB5832 Driftwood



FAB5828 Sky

Application  
Panel

Content  
63% Recycled Polyester,  
37% Polypropylene

Width  
66 inches

Finish  
Polyester Binder

Reduced Environmental Impact  
Recycled Content  
GREENGUARD Gold Certified



TECHNICAL INFORMATION

Content: 63% Recycled Polyester (60% Pre-/3% Post-Consumer), 37% Polypropylene	Backing: None	Visual Repeat: Non-Matching
Width: 66"	Finish: Polyester Binder	Directional: Yes
Weight: 10.6 oz./linear yard	Cleaning Code: WS	Railroaded: No

PERFORMANCE (*ACT* Registered Certification Marks)	Test Method	Results
Breaking Strength:  *	ASTM-D-5034	Warp 175 min lbs / Fill 125 min lbs
Colorfastness to Crocking:  *	AATCC-8	Dry: Class 4 min / Wet: Class 3 min
Colorfastness to Light:  *	AATCC-16 Option 3	Class 4 min at 60 hours

Class in the colorfastness requirements is based on a numerical scale of 5 for negligible or no color transfer to 1 for very severe color change or color transfer.

FLAMMABILITY \*

ASTM E84 (Unadhered) Class 1 or A	Passes
-----------------------------------	--------

REDUCED ENVIRONMENTAL IMPACT

Recycled Content

GREENGUARD Gold Certified products are tested for low chemical emissions to standard UL 2818. For more information, visit [UL.com/gg](http://UL.com/gg).

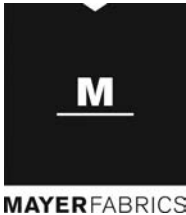
CLEANING INFORMATION

WS: Water/Solvent Cleaner – Spot clean, with a mild solvent, an upholstery shampoo, or the foam from a mild detergent. When using a solvent or dry cleaning product, follow instructions carefully and clean only in a well-ventilated room. Avoid any product that contains carbon tetrachloride or other toxic materials. With either method, pretest a small area before proceeding.

ADDITIONAL INFORMATION

**Custom Capabilities:** All patterns can be custom colored. Minimum yardage applies.  
**Memo Samples:** Please keep this card intact. Individual memo samples can be ordered on our website or by contacting customer service.  
**Color Matching:** Mayer Fabrics always attempts to ship a satisfactory commercial match. Because of industry standard dye lot variation, colors may not match exactly.  
**Specifications:** Specifications are correct at the time of printing. Current specifications are available on our website.  
**For information or assistance with products or services, call us at 800.428.4415 or refer to our website, [www.mayerfabrics.com](http://www.mayerfabrics.com).**

This 100% polyester panel fabric is included in the Underwriters Laboratory Fabric Recognition Program. Additional testing of this U.L. recognized component fabric is not required on approved panels from participating manufacturers.



U100CD \*u100cd\*





**FAB0318 Crystal**



**FAB0322 Tonic**



**FAB0319 Spritzer**



**FAB0320 Cream Soda**



**FAB0323 Ginger Ale**



**FAB0315 Root Beer**



**FAB0316 Ale**



**FAB0321 Cherry Cola**



# NITRO Grade B



## TECHNICAL INFORMATION

Content: 100% Post Consumer Recycled Polyester  
Width: 66"  
Weight: 12.3 oz./linear yard

Backing: None  
Finish: None  
Cleaning Code: WS

Approx. Repeat: 9.1" H, 16.7" V  
Directional: Yes  
Railroaded: No

## PERFORMANCE

	Test Method	Results
Breaking Strength: ★*	ASTM-D-5034	Exceeds Warp 220 lbs min/Fill 130 lbs min
Colorfastness to Crocking: ●*	AATCC-8	Dry: Passes Class 4 min/Wet: Passes Class 3 min
Colorfastness to Light: ☀*	AATCC-16 Option 3	Exceeds 40 Hours - Class 4 min

Class in the colorfastness requirements is based on a numerical scale of 5 for negligible or no color transfer to 1 for very severe color change or color transfer.

## FLAMMABILITY 🔥\*

ASTM E84 Class 1 or A Passes

## CLEANING INFORMATION

WS: Water/Solvent Cleaner – Spot clean, with a mild solvent, an upholstery shampoo, or the foam from a mild detergent. When using a solvent or dry cleaning product, follow instructions carefully and clean only in a well-ventilated room. Avoid any product that contains carbon tetrachloride or other toxic materials. With either method, pretest a small area before proceeding.

For detailed specifications, care and cleaning information, please refer to the Mayer Fabrics web site at [www.mayerfabrics.com](http://www.mayerfabrics.com).

Please keep this card intact. Individual memo samples are available. Please contact Mayer Fabrics or refer to the Mayer Fabrics web site. Color matching: Mayer will always attempt to ship a satisfactory commercial match. Because of industry standard dye lot variation, colors may not match exactly. Specifications are correct at time of printing. Current specifications are available on the Mayer Fabrics web site. [www.mayerfabrics.com](http://www.mayerfabrics.com)

\*ACT\* Registered Certification Marks



100% of the electricity used to make this product is matched by GREEN-E certified Renewable Energy Certificate ([www.green-e.org](http://www.green-e.org))



Terratex® is a registered trademark of True Textiles Inc. and designates fabrics that are made from 100% recycled or compostable materials using increasingly sustainable manufacturing practices to produce a high quality product that is recyclable at the end of its useful life.



This 100% polyester panel fabric is included in the Underwriters Laboratory Fabric Recognition Program. Additional testing of this U.L. recognized component fabric is not required on approved panels from participating manufacturers.







**FAB0318 Crystal**



**FAB0322 Tonic**



**FAB0319 Spritzer**



**FAB0320 Cream Soda**



**FAB0323 Ginger Ale**



**FAB0315 Root Beer**



**FAB0316 Ale**



**FAB0321 Cherry Cola**



# NITRO Grade B



## TECHNICAL INFORMATION

Content: 100% Post Consumer Recycled Polyester  
Width: 66"  
Weight: 12.3 oz./linear yard

Backing: None  
Finish: None  
Cleaning Code: WS

Approx. Repeat: 9.1" H, 16.7" V  
Directional: Yes  
Railroaded: No

## PERFORMANCE

	Test Method	Results
Breaking Strength: ★*	ASTM-D-5034	Exceeds Warp 220 lbs min/Fill 130 lbs min
Colorfastness to Crocking: ●*	AATCC-8	Dry: Passes Class 4 min/Wet: Passes Class 3 min
Colorfastness to Light: ☀*	AATCC-16 Option 3	Exceeds 40 Hours - Class 4 min

Class in the colorfastness requirements is based on a numerical scale of 5 for negligible or no color transfer to 1 for very severe color change or color transfer.

## FLAMMABILITY 🔥\*

ASTM E84 Class 1 or A Passes

## CLEANING INFORMATION

WS: Water/Solvent Cleaner – Spot clean, with a mild solvent, an upholstery shampoo, or the foam from a mild detergent. When using a solvent or dry cleaning product, follow instructions carefully and clean only in a well-ventilated room. Avoid any product that contains carbon tetrachloride or other toxic materials. With either method, pretest a small area before proceeding.

For detailed specifications, care and cleaning information, please refer to the Mayer Fabrics web site at [www.mayerfabrics.com](http://www.mayerfabrics.com).

Please keep this card intact. Individual memo samples are available. Please contact Mayer Fabrics or refer to the Mayer Fabrics web site. Color matching: Mayer will always attempt to ship a satisfactory commercial match. Because of industry standard dye lot variation, colors may not match exactly. Specifications are correct at time of printing. Current specifications are available on the Mayer Fabrics web site. [www.mayerfabrics.com](http://www.mayerfabrics.com)

\*ACT\* Registered Certification Marks



100% of the electricity used to make this product is matched by GREEN-E certified Renewable Energy Certificate ([www.green-e.org](http://www.green-e.org))



Terratex® is a registered trademark of True Textiles Inc. and designates fabrics that are made from 100% recycled or compostable materials using increasingly sustainable manufacturing practices to produce a high quality product that is recyclable at the end of its useful life.



This 100% polyester panel fabric is included in the Underwriters Laboratory Fabric Recognition Program. Additional testing of this U.L. recognized component fabric is not required on approved panels from participating manufacturers.







165-002 Linen  
FAB2971



165-007 Parchment  
FAB2996



165-009 Mesa  
FAB6081



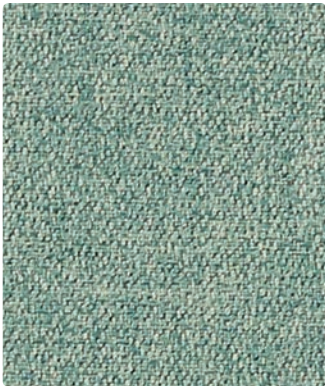
165-003 Spring  
FAB6082



165-026 Aluminum  
FAB2972



165-017 Taupe  
FAB6083



165-013 Aloe  
FAB6084



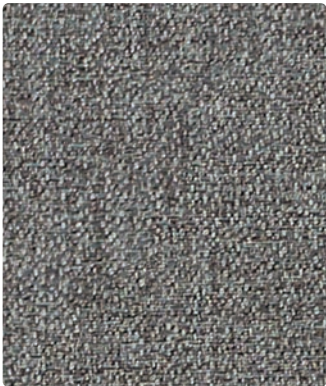
165-016 Gray Mix  
FAB8070



165-000 Earth  
FAB2970



165-004 Blue Mist  
FAB6085



165-006 Storm  
FAB2995

Application  
Panel/Wall

Content  
66% Post-Consumer Recycled Polyester, 34% Polyester

Width  
66 inches

Finish  
None

Reduced Environmental Impact  
GREENGUARD Gold Certified



TECHNICAL INFORMATION

Content: 66% Post-Consumer Recycled Polyester, 34% Polyester	Weight: 14.3 oz./linear yard	
Width: 66"	Finish: None	
Backing: None	Directional: Yes	Railroaded: No
Approx. Repeat: None		

PERFORMANCE

Colorfastness to Crocking AATCC-8	Results
Colorfastness to Light AATCC-16E	Dry: Class 4 / Wet: Class 4
	Class 4.5 at 40 hours

FLAMMABILITY

ASTM E84 (Unadhered) Class 1 or A
California Technical Bulletin 117-2013

REDUCED ENVIRONMENTAL IMPACT

This product is GREENGUARD Gold Certified for low chemical and particle emissions to UL standard UL 2818 and may contribute to LEED certification. For complete information visit [mayerfabrics.com](http://mayerfabrics.com) and [UL.com/gg](http://UL.com/gg).

CLEANING INFORMATION

WS: Water/Solvent Cleaner
---------------------------

ADDITIONAL INFORMATION

**Custom Capabilities:** All patterns can be custom colored. Minimum yardage applies.  
**Digital Swatch Card Color Matching:** Due to color variations on different monitors and color printers, actual swatch colors may vary slightly. Please request a memo sample from Mayer Fabrics to ensure proper color representation.  
**Specifications:** Specifications are correct at the time of printing. Current specifications are available on our website.



This fabric meets or exceeds these ACT performance guidelines.  
\*Certification Marks owned by ACT\*



This 100% polyester fabric is included in the Underwriter's Laboratory Fabric Recognition Program. Additional testing of this U.L. recognized component is not required on approved panels from participating manufacturers.







**FAB7849 Meadow**



**FAB7855 Frost**



**FAB7848 Maize**



**FAB7850 Blue Mist**



**FAB7854 Fog**



**FAB7847 Bark**



# TERRAIN Grade C



## TECHNICAL INFORMATION

Content: 100% Post Consumer Recycled Polyester  
Width: 66"  
Weight: 16 oz./linear yard

Backing: None  
Finish: None  
Cleaning Code: WS

Approx. Repeat: 0" H, Non-Matching V  
Directional: Yes  
Railroaded: No

## PERFORMANCE

	Test Method	Results
Breaking Strength: ★*	ASTM-D-5034	Exceeds Warp 250 lbs min/Fill 150 lbs min
Colorfastness to Crocking: ●*	AATCC-8	Dry: Passes Class 4 min/Wet: Passes Class 3 min
Colorfastness to Light: ☀*	AATCC-16	Exceeds 40 Hours - Class 4 min

Class in the colorfastness requirements is based on a numerical scale of 5 for negligible or no color transfer to 1 for very severe color change or color transfer.

## FLAMMABILITY 🔥\*

ASTM E84 Class 1 or A Passes

## CLEANING INFORMATION

WS: Water/Solvent Cleaner – Spot clean, with a mild solvent, an upholstery shampoo, or the foam from a mild detergent. When using a solvent or dry cleaning product, follow instructions carefully and clean only in a well-ventilated room. Avoid any product that contains carbon tetrachloride or other toxic materials. With either method, pretest a small area before proceeding.

For detailed specifications, care and cleaning information, please refer to the Mayer Fabrics web site at [www.mayerfabrics.com](http://www.mayerfabrics.com).

Please keep this card intact. Individual memo samples are available. Please contact Mayer Fabrics or refer to the Mayer Fabrics web site. Color matching: Mayer will always attempt to ship a satisfactory commercial match. Because of industry standard dye lot variation, colors may not match exactly. Specifications are correct at time of printing. Current specifications are available on the Mayer Fabrics web site. [www.mayerfabrics.com](http://www.mayerfabrics.com)

\*ACT® Registered Certification Marks



100% of the electricity used to make this product is matched by GREEN-E certified Renewable Energy Certificate ([www.green-e.org](http://www.green-e.org))



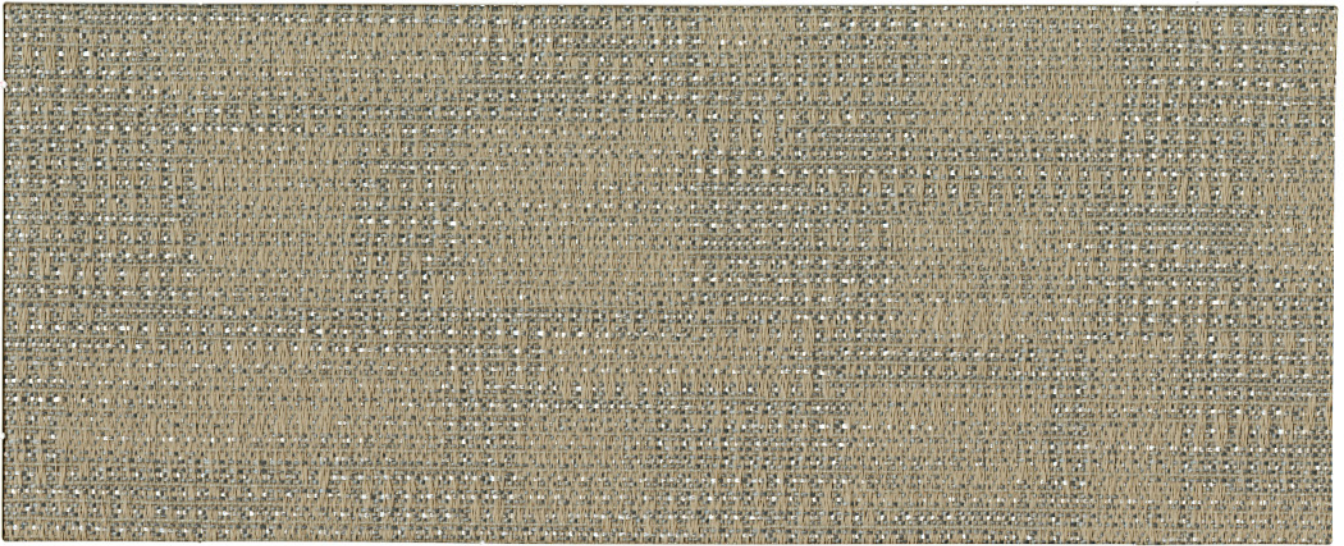
Terratex® is a registered trademark of True Textiles Inc. and designates fabrics that are made from 100% recycled or compostable materials using increasingly sustainable manufacturing practices to produce a high quality product that is recyclable at the end of its useful life.



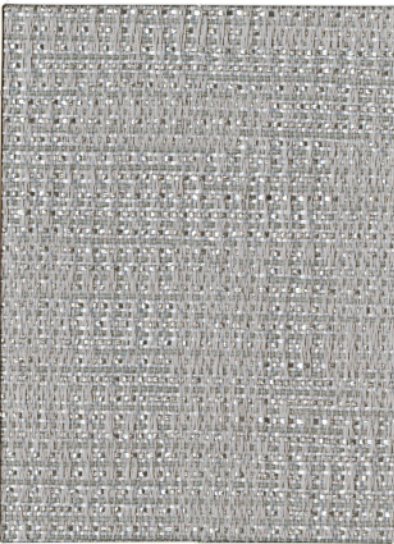
This 100% polyester panel fabric is included in the Underwriters Laboratory Fabric Recognition Program. Additional testing of this U.L. recognized component fabric is not required on approved panels from participating manufacturers.



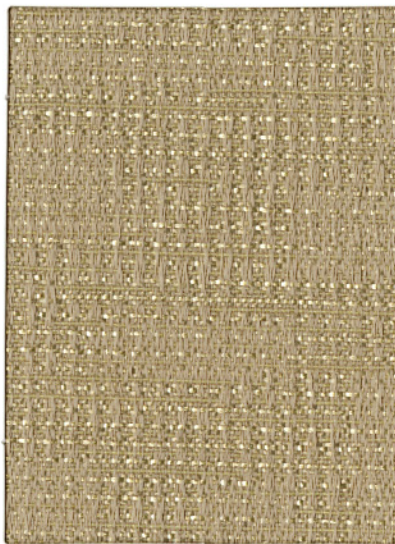




FAB7846 Cliff



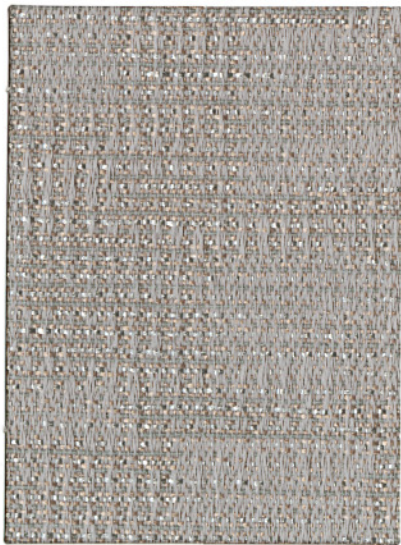
FAB7842 Blue Mist



FAB7841 Meadow



FAB7844 Parchment



FAB7843 Pewter



FAB7845 Mesa



FAB7840 Shadow



# SPECTRE Grade B



## TECHNICAL INFORMATION

Content: 82% Post Industrial Recycled Polyester,  
18% Post Consumer Recycled Polyester  
Width: 66"  
Weight: 11.36 oz./linear yard

Backing: None  
Finish: None  
Cleaning Code: WS

Approx. Repeat: 6.28" H, 8" V Non-Matching  
Directional: Yes  
Railroaded: No

## PERFORMANCE

### Test Method

### Results

Breaking Strength: ★*	ASTM-D-5034 (Grab Test)	Exceeds Warp 100 lbs/Fill 100 lbs
Seam Slippage: ★*	ASTM-D-434	Exceeds Warp 81 lbs/Fill 72 lbs
Colorfastness to Crocking: ●*	AATCC-8	Dry: Passes Class 4 min/Wet: Passes Class 3 min
Colorfastness to Light: ★*	AATCC-16	Exceeds 40 Hours - Class 4 min

Class in the colorfastness requirements is based on a numerical scale of 5 for negligible or no color transfer to 1 for very severe color change or color transfer.

## FLAMMABILITY ★\*

California Technical Bulletin 117, Section E (Equivalent to BIFMA) Passes  
ASTM E84 Class 1 or A Passes


## CLEANING INFORMATION

WS: Water/Solvent Cleaner – Spot clean, with a mild solvent, an upholstery shampoo, or the foam from a mild detergent. When using a solvent or dry cleaning product, follow instructions carefully and clean only in a well-ventilated room. Avoid any product that contains carbon tetrachloride or other toxic materials. With either method, pretest a small area before proceeding.

For detailed specifications, care and cleaning information, please refer to the Mayer Fabrics web site at [www.mayerfabrics.com](http://www.mayerfabrics.com).

Please keep this card intact. Individual memo samples are available. Please contact Mayer Fabrics or refer to the Mayer Fabrics web site. Color matching: Mayer will always attempt to ship a satisfactory commercial match. Because of industry standard dye lot variation, colors may not match exactly. Specifications are correct at time of printing. Current specifications are available on the Mayer Fabrics web site. [www.mayerfabrics.com](http://www.mayerfabrics.com)

\*ACT\* Registered Certification Marks

 This 100% polyester panel fabric is included in the Underwriters Laboratory Fabric Recognition Program. Additional testing of this U.L. recognized component fabric is not required on approved panels from participating manufacturers.







FAB7871 Fog



FAB7869 Quartz



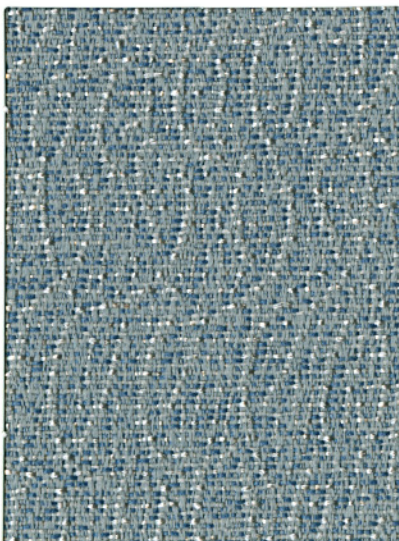
FAB7868 Zinc



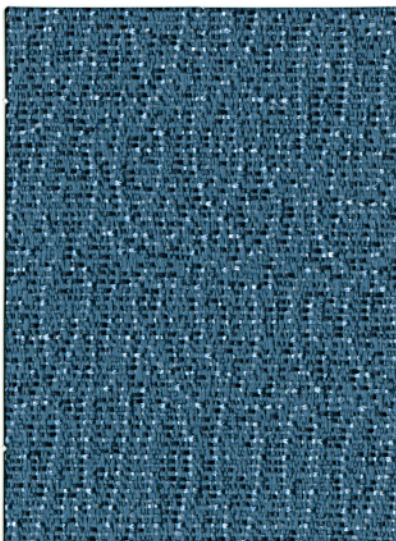
FAB7866 Meadow



FAB7865 Harvest



FAB7867 Sky



FAB5771 Harbor



FAB7870 Spice



# ZEST Grade A



## TECHNICAL INFORMATION

Content: 100% Post Industrial Recycled Polyester  
Width: 66"  
Weight: 10.04 oz./linear yard

Backing: None  
Finish: None  
Cleaning Code: WS

Approx. Repeat: 14.125" H, 12.25" V Non-Matching  
Directional: Yes  
Railroaded: No

## PERFORMANCE

	Test Method	Results
Breaking Strength: ★*	ASTM-D-5034	Exceeds Warp 266 lbs/Fill 203 lbs
Colorfastness to Crocking: ●*	AATCC-8	Dry: Passes Class 4/Wet: Passes Class 3.5
Colorfastness to Light: ☀*	AATCC-16A	Exceeds 60 Hours - Class 4

Class in the colorfastness requirements is based on a numerical scale of 5 for negligible or no color transfer to 1 for very severe color change or color transfer.

## FLAMMABILITY 🔥\*

ASTM E84 Class 1 or A

Passes

## CLEANING INFORMATION

WS: Water/Solvent Cleaner – Spot clean, with a mild solvent, an upholstery shampoo, or the foam from a mild detergent. When using a solvent or dry cleaning product, follow instructions carefully and clean only in a well-ventilated room. Avoid any product that contains carbon tetrachloride or other toxic materials. With either method, pretest a small area before proceeding.

For detailed specifications, care and cleaning information, please refer to the Mayer Fabrics web site at [www.mayerfabrics.com](http://www.mayerfabrics.com).

Please keep this card intact. Individual memo samples are available. Please contact Mayer Fabrics or refer to the Mayer Fabrics web site. Color matching: Mayer will always attempt to ship a satisfactory commercial match. Because of industry standard dye lot variation, colors may not match exactly. Specifications are correct at time of printing. Current specifications are available on the Mayer Fabrics web site. [www.mayerfabrics.com](http://www.mayerfabrics.com)

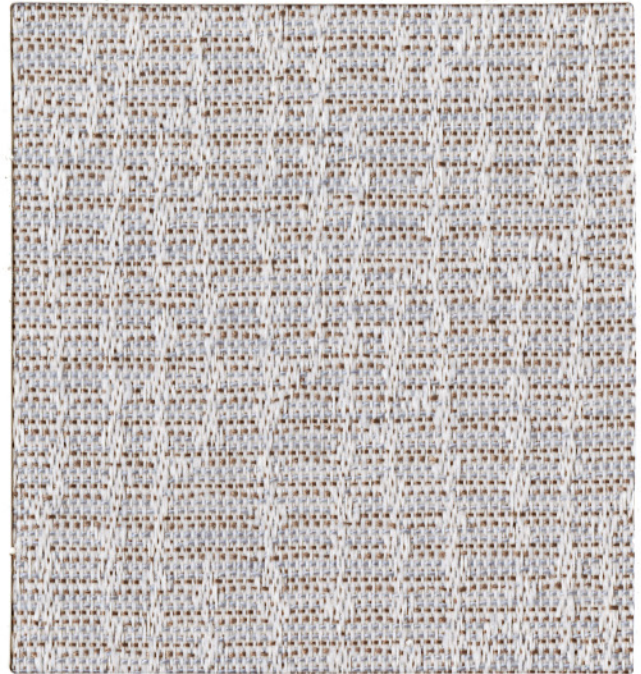
\*ACT\* Registered Certification Marks



This 100% polyester panel fabric is included in the Underwriters Laboratory Fabric Recognition Program. Additional testing of this U.L. recognized component fabric is not required on approved panels from participating manufacturers.







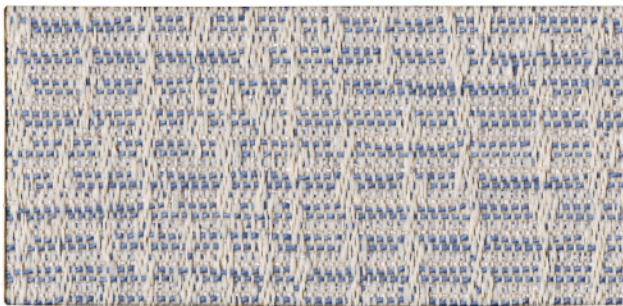
FAB0281 Fog



FAB0282 Bone



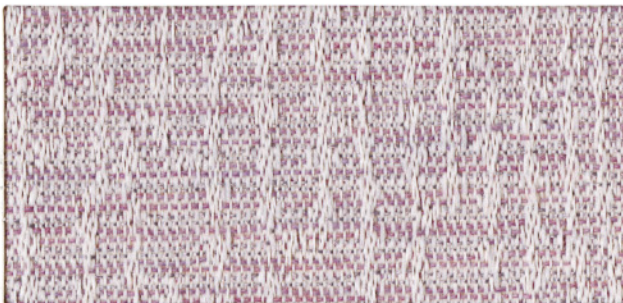
FAB0284 Mushroom



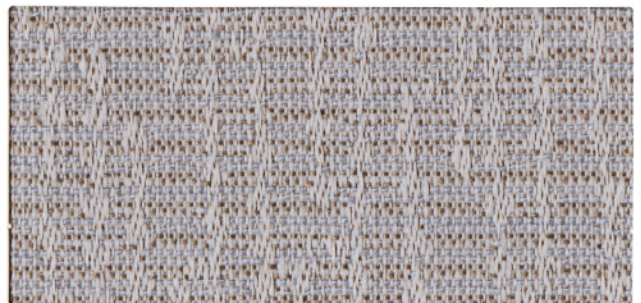
FAB0279 Blue Sky



FAB0278 Laurel



FAB0280 Lavender Neutral



FAB0283 Pewter



# GRASSCLOTH Grade A




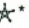


## TECHNICAL INFORMATION

Content: 68% Post Industrial Recycled Polyester,  
32% Post Consumer Recycled Polyester  
Width: 66"  
Weight: 11.5 oz./linear yard

Backing: None  
Finish: None  
Cleanability: WS

Approx. Repeat: Non-Matching  
Directional: Yes  
Shown Railroaded: No

## PERFORMANCE

	Test Method	Results
Surface Abrasion: Heavy Duty  *	ASTM-D-3597 Wyzenbeek Test	Exceeds 15,000 Double Rubs
Breaking Strength:  *	ASTM-D-5034	Exceeds Warp 225 lbs min/Fill 100 lbs min
Colorfastness to Crocking:  *	AATCC-8	Dry: Passes Class 4 min/Wet: Passes Class 3 min
Colorfastness to Light:  *	AATCC-16 Option 3	Exceeds 40 Hours - Class 4 min

Class in the colorfastness requirements is based on a numerical scale of 5 for negligible or no color transfer to 1 for very severe color change or color transfer.

## FLAMMABILITY

California Technical Bulletin 117, Section E (Equivalent to BIFMA) Passes  
ASTM E84 Passes

## CLEANING INFORMATION

WS: Water/Solvent Cleaner – Spot clean, with a mild solvent, an upholstery shampoo, or the foam from a mild detergent. When using a solvent or dry cleaning product, follow instructions carefully and clean only in a well-ventilated room. Avoid any product that contains carbon tetrachloride or other toxic materials. With either method, pretest a small area before proceeding.

For detailed specifications, care and cleaning information, please refer to the Mayer Fabrics web site at [www.mayerfabrics.com](http://www.mayerfabrics.com).

Please keep this card intact. Individual memo samples are available. Please contact Mayer Fabrics or refer to the Mayer Fabrics web site. Color matching: Mayer will always attempt to ship a satisfactory commercial match. Because of industry standard dye lot variation, colors may not match exactly. Specifications are correct at time of printing. Current specifications are available on the Mayer Fabrics web site. [www.mayerfabrics.com](http://www.mayerfabrics.com)

\*ACT\* Registered Certification Marks



Terratec® is a registered trademark of True Textiles Inc. and designates fabrics that are made from 100% recycled or compostable materials using increasingly sustainable manufacturing practices to produce a high quality product that is recyclable at the end of its useful life.



This 100% polyester panel fabric is included in the Underwriters Laboratory Fabric Recognition Program. Additional testing of this U.L. recognized component fabric is not required on approved panels from participating manufacturers.







**FAB7811 Driftwood**



**FAB7809 Blue Mist**



**FAB7808 Moonbeam**



**FAB7813 Fog**



**FAB7810 Cliff**



**FAB7812 Mesa**



**FAB7807 Shadow**



# MELANGE Grade B



## TECHNICAL INFORMATION

Content: 79% Post Industrial Recycled Polyester,  
21% Post Consumer Recycled Polyester  
Width: 66"  
Weight: 11.52 oz./linear yard

Backing: None  
Finish: None  
Cleaning Code: WS

Approx. Repeat: 6.75" H, 7.875" V Non-Matching  
Directional: Yes  
Railroaded: No

## PERFORMANCE

	Test Method	Results
Breaking Strength: ★*	ASTM-D-5034 (Grab Test)	Exceeds Warp 100 lbs/Fill 100 lbs
Seam Slippage: ★*	ASTM-D-434	Exceeds Warp 69 lbs/Fill 95 lbs
Colorfastness to Crocking: ●*	AATCC-8	Dry: Passes Class 4 min/Wet: Passes Class 3 min
Colorfastness to Light: ☀*	AATCC-16	Exceeds 40 Hours - Class 4 min

Class in the colorfastness requirements is based on a numerical scale of 5 for negligible or no color transfer to 1 for very severe color change or color transfer.

## FLAMMABILITY 🔥\*

ASTM E84 Class 1 or A  
California Technical Bulletin 117, Section E (Equivalent to BIFMA)  
NFPA 260 (Equivalent to UFAC) Class 1

Passes  
Passes  
Passes

## CLEANING INFORMATION

WS: Water/Solvent Cleaner – Spot clean, with a mild solvent, an upholstery shampoo, or the foam from a mild detergent. When using a solvent or dry cleaning product, follow instructions carefully and clean only in a well-ventilated room. Avoid any product that contains carbon tetrachloride or other toxic materials. With either method, pretest a small area before proceeding.

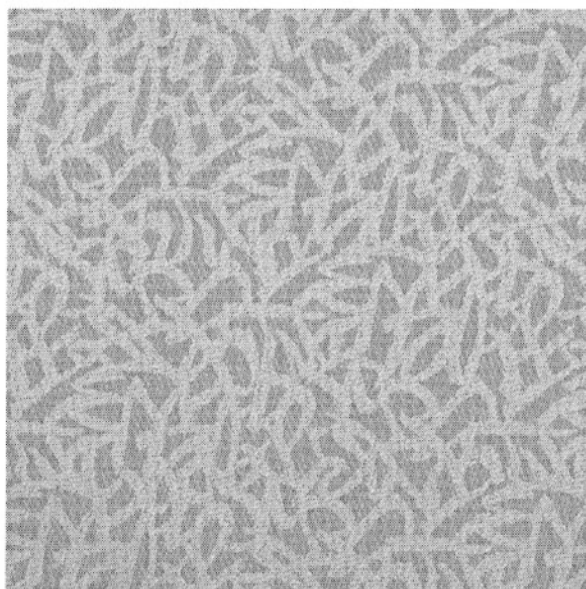
For detailed specifications, care and cleaning information, please refer to the Mayer Fabrics web site at [www.mayerfabrics.com](http://www.mayerfabrics.com).

Please keep this card intact. Individual memo samples are available. Please contact Mayer Fabrics or refer to the Mayer Fabrics web site. Color matching: Mayer will always attempt to ship a satisfactory commercial match. Because of industry standard dye lot variation, colors may not match exactly. Specifications are correct at time of printing. Current specifications are available on the Mayer Fabrics web site. [www.mayerfabrics.com](http://www.mayerfabrics.com)

\*ACT\* Registered Certification Marks



This 100% polyester panel fabric is included in the Underwriters Laboratory Fabric Recognition Program. Additional testing of this U.L. recognized component fabric is not required on approved panels from participating manufacturers.



MELANGE - Repeat: 6.75" H, 7.875" V Non-Matching







FAB7822 Vanilla



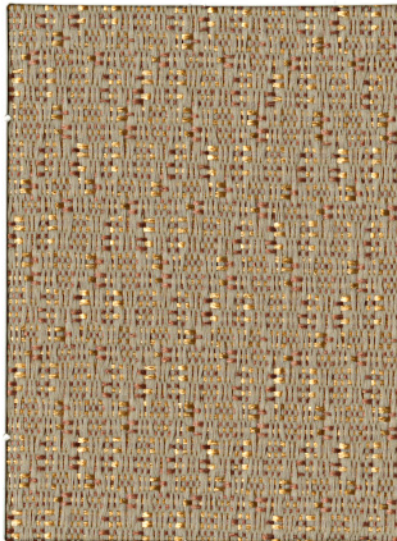
FAB7815 Pistachio



FAB7818 Khaki



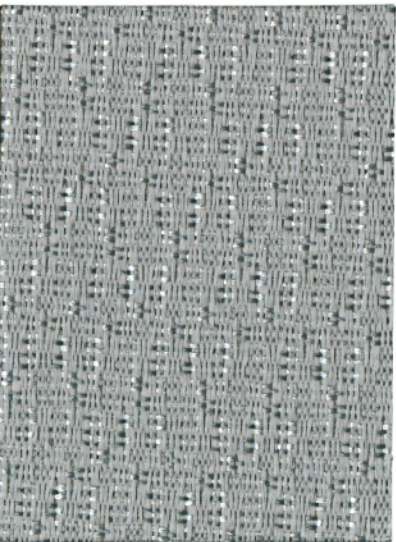
FAB7821 Fog



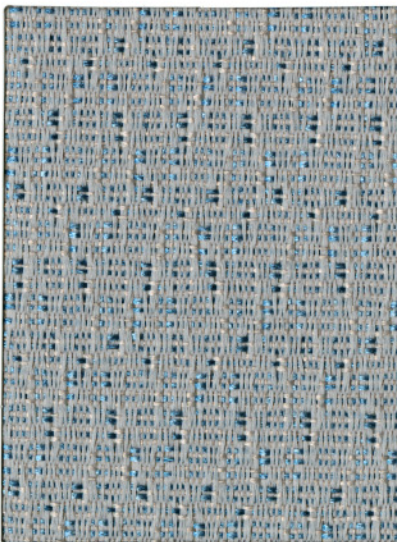
FAB7819 Mesa



FAB7820 Sandstone



FAB7817 Pewter



FAB7816 Sky



FAB7814 Earth



# NEXUS Grade A



## TECHNICAL INFORMATION

Content: 84% Post Industrial Recycled Polyester,  
16% Post Consumer Recycled Polyester  
Width: 66"  
Weight: 10.24 oz./linear yard

Backing: None  
Finish: None  
Cleaning Code: WS

Approx. Repeat: 1.454" H, 1.454" V Non-Matching  
Directional: Yes  
Railroaded: No

## PERFORMANCE

	Test Method	Results
Breaking Strength: ★*	ASTM-D-5034 (Grab Test)	Exceeds Warp 100 lbs/Fill 94 lbs
Seam Slippage: ★*	ASTM-D-434	Exceeds Warp 65 lbs/Fill 89 lbs
Colorfastness to Crocking: ●*	AATCC-8	Dry: Passes Class 4 min/Wet: Passes Class 3 min
Colorfastness to Light: ☀*	AATCC-16	Exceeds 40 Hours - Class 4 min

Class in the colorfastness requirements is based on a numerical scale of 5 for negligible or no color transfer to 1 for very severe color change or color transfer.

## FLAMMABILITY ●\*

California Technical Bulletin 117, Section E (Equivalent to BIFMA) Passes  
ASTM E84 Class 1 or A Passes


## CLEANING INFORMATION

WS: Water/Solvent Cleaner – Spot clean, with a mild solvent, an upholstery shampoo, or the foam from a mild detergent. When using a solvent or dry cleaning product, follow instructions carefully and clean only in a well-ventilated room. Avoid any product that contains carbon tetrachloride or other toxic materials. With either method, pretest a small area before proceeding.

For detailed specifications, care and cleaning information, please refer to the Mayer Fabrics web site at [www.mayerfabrics.com](http://www.mayerfabrics.com).

Please keep this card intact. Individual memo samples are available. Please contact Mayer Fabrics or refer to the Mayer Fabrics web site. Color matching: Mayer will always attempt to ship a satisfactory commercial match. Because of industry standard dye lot variation, colors may not match exactly. Specifications are correct at time of printing. Current specifications are available on the Mayer Fabrics web site. [www.mayerfabrics.com](http://www.mayerfabrics.com)

\*ACT\* Registered Certification Marks

 This 100% polyester panel fabric is included in the Underwriters Laboratory Fabric Recognition Program. Additional testing of this U.L. recognized component fabric is not required on approved panels from participating manufacturers.







FAB7829 Blue Mist



FAB7824 Ambrosia



FAB7827 Quartz



FAB7825 Sky



FAB7830 Fog



FAB7831 Sand



FAB7826 Pewter



FAB7828 Spice



FAB7823 Cliff



# PARAGON Grade B



## TECHNICAL INFORMATION

Content: 79% Post Industrial Recycled Polyester,  
21% Post Consumer Recycled Polyester  
Width: 66"  
Weight: 11.52 oz./linear yard

Backing: None  
Finish: None  
Cleaning Code: WS

Approx. Repeat: Non-Matching  
Directional: Yes  
Railroaded: No

## PERFORMANCE

	Test Method	Results
Breaking Strength: ★*	ASTM-D-5034 (Grab Test)	Exceeds Warp 100 lbs/Fill 100 lbs
Seam Slippage: ★*	ASTM-D-434	Exceeds Warp 98 lbs/Fill 97 lbs
Colorfastness to Crocking: ●*	AATCC-8	Dry: Passes Class 4 min/Wet: Passes Class 3 min
Colorfastness to Light: ☀*	AATCC-16	Exceeds 40 Hours - Class 4 min

Class in the colorfastness requirements is based on a numerical scale of 5 for negligible or no color transfer to 1 for very severe color change or color transfer.

## FLAMMABILITY ●\*

California Technical Bulletin 117, Section E (Equivalent to BIFMA) Passes  
ASTM E84 Class 1 or A Passes


## CLEANING INFORMATION

WS: Water/Solvent Cleaner – Spot clean, with a mild solvent, an upholstery shampoo, or the foam from a mild detergent. When using a solvent or dry cleaning product, follow instructions carefully and clean only in a well-ventilated room. Avoid any product that contains carbon tetrachloride or other toxic materials. With either method, pretest a small area before proceeding.

For detailed specifications, care and cleaning information, please refer to the Mayer Fabrics web site at [www.mayerfabrics.com](http://www.mayerfabrics.com).

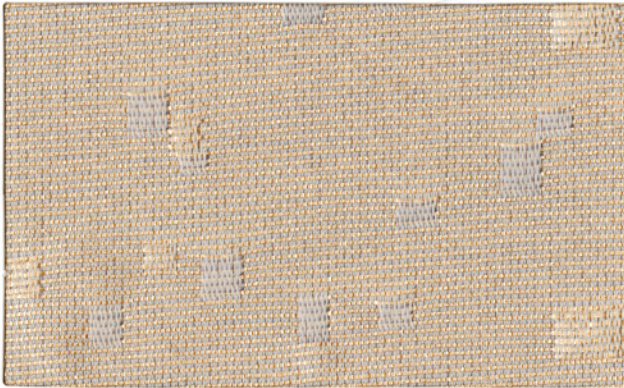
Please keep this card intact. Individual memo samples are available. Please contact Mayer Fabrics or refer to the Mayer Fabrics web site. Color matching: Mayer will always attempt to ship a satisfactory commercial match. Because of industry standard dye lot variation, colors may not match exactly. Specifications are correct at time of printing. Current specifications are available on the Mayer Fabrics web site. [www.mayerfabrics.com](http://www.mayerfabrics.com)

\*ACT\* Registered Certification Marks

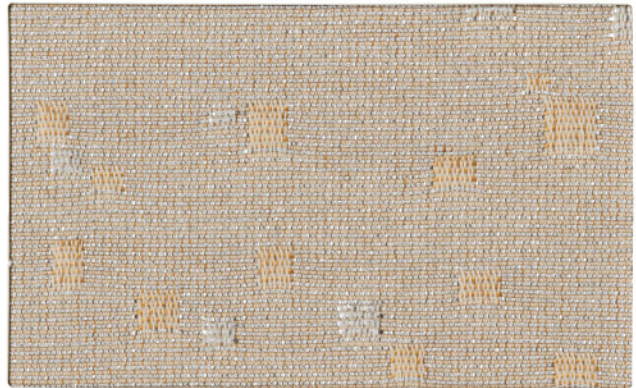
 This 100% polyester panel fabric is included in the Underwriters Laboratory Fabric Recognition Program. Additional testing of this U.L. recognized component fabric is not required on approved panels from participating manufacturers.



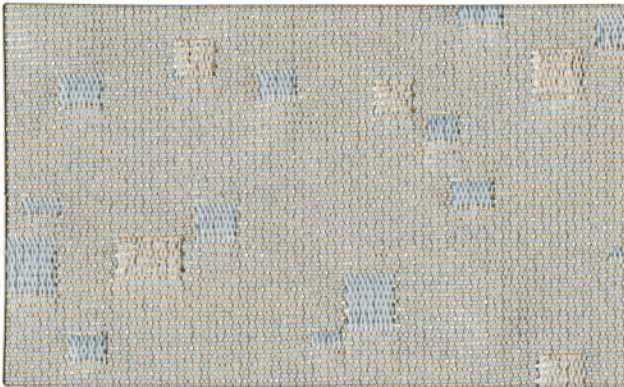




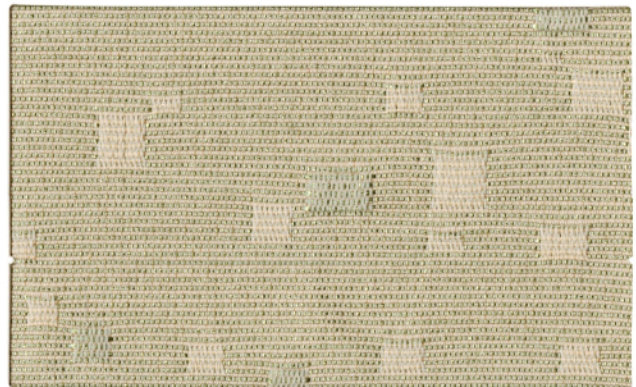
FAB0307 Khaki



FAB0313 Tawny



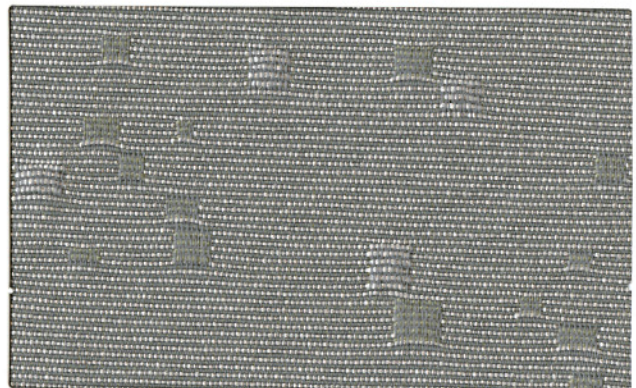
FAB0309 Blue Mist



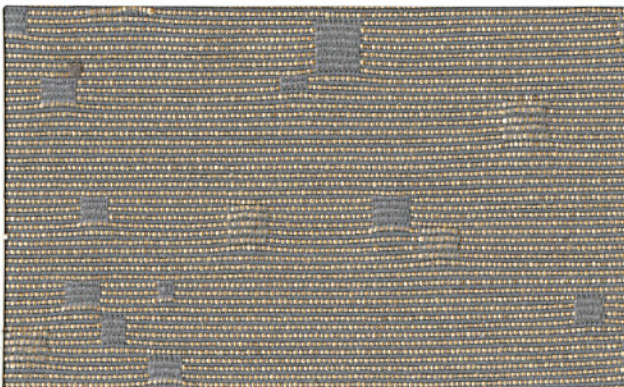
FAB0308 Wasabi



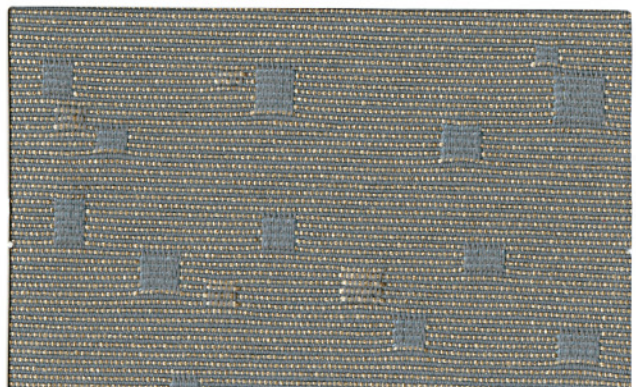
FAB0312 Mushroom



FAB0311 Pewter



FAB0310 Lavender Mist



FAB0314 Blue Slate



# SPACE ODYSSEY Grade B



## TECHNICAL INFORMATION

Content: 77% Post Industrial Recycled Polyester,  
23% Post Consumer Recycled Polyester  
Width: 66"  
Weight: 12.1 oz./linear yard

Backing: None  
Finish: None  
Cleanability: WS

Approx. Repeat: 16.6" H, 8.7" V  
Directional: Yes  
Shown Railroaded: No

## PERFORMANCE

	Test Method	Results
Surface Abrasion: Heavy Duty <b>A</b> *	ASTM-D-3597 Wyzenbeek Test	Exceeds 15,000 Double Rubs
Breaking Strength: <b>☆</b> *	ASTM-D-5034	Exceeds Warp 250 lbs/Fill 125 lbs
Colorfastness to Crocking: <b>●</b> *	AATCC-8	Dry: Passes Class 4 min/Wet: Passes Class 3 min
Colorfastness to Light: <b>☀</b> *	AATCC-16 Option 3	Exceeds 40 Hours - Class 4 min

Class in the colorfastness requirements is based on a numerical scale of 5 for negligible or no color transfer to 1 for very severe color change or color transfer.

## FLAMMABILITY **▲**\*

California Technical Bulletin 117, Section E (Equivalent to BIFMA) Passes  
ASTM E84 Passes

## CLEANING INFORMATION

WS: Water/Solvent Cleaner – Spot clean, with a mild solvent, an upholstery shampoo, or the foam from a mild detergent. When using a solvent or dry cleaning product, follow instructions carefully and clean only in a well-ventilated room. Avoid any product that contains carbon tetrachloride or other toxic materials. With either method, pretest a small area before proceeding.

For detailed specifications, care and cleaning information, please refer to the Mayer Fabrics web site at [www.mayerfabrics.com](http://www.mayerfabrics.com).

Please keep this card intact. Individual memo samples are available. Please contact Mayer Fabrics or refer to the Mayer Fabrics web site. Color matching: Mayer will always attempt to ship a satisfactory commercial match. Because of industry standard dye lot variation, colors may not match exactly. Specifications are correct at time of printing. Current specifications are available on the Mayer Fabrics web site. [www.mayerfabrics.com](http://www.mayerfabrics.com)

\*ACT\* Registered Certification Marks



Terratex® is a registered trademark of True Textiles Inc. and designates fabrics that are made from 100% recycled or compostable materials using increasingly sustainable manufacturing practices to produce a high quality product that is recyclable at the end of its useful life.



This 100% polyester panel fabric is included in the Underwriters Laboratory Fabric Recognition Program. Additional testing of this U.L. recognized component fabric is not required on approved panels from participating manufacturers.

