



Classic XXI Panel Systems

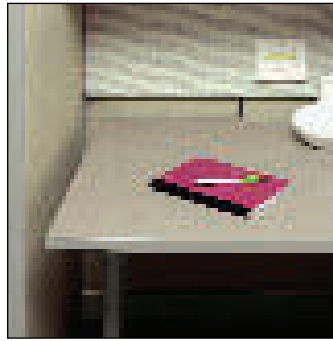


OFG UNICOR
OFFICE
FURNITURE
GROUP

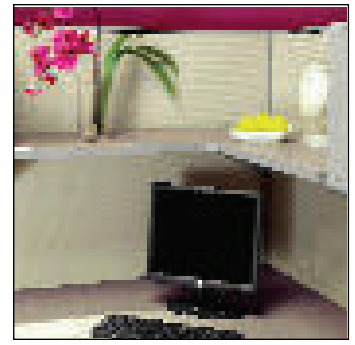
Classic XXI

Whether your tasks dictate you use a basic workstation or a managerial office, Classic XXI can suit your office furniture needs with style. And because the segments can be joined flawlessly, multi-user workspaces are as easy to create as stand-alone units. There is no "standard" office space, so Classic XXI includes multiple solutions to address variables such as job functions, traffic patterns, data and communication needs, accessibility, and privacy requirements. With Classic XXI there is no boiler-plate workstation. Component-based ordering allows you to customize your work space in the areas that are most important to you.

DETAILS:



*Panel-Wrapped
Free-Standing Desking*



Corner Shelf

A panel-wrapped table creates the same amount of functional space as a worksurface, but allows for easy user adjustability.





Classic XXI can be tailored by adding filing cabinets, tool rails with accessories, corner shelves, etc. to create a more advanced/specific area depending on the user's needs.

Office Furniture Solutions

- Corner shelves adds a 16" deep tier of panel-mounted storage to an under utilized area of workspace
- The Composer articulating keyboard is equipped with a wristrest and rotating mouse pad
- Tool rails and accessories localize storage
- Flipper Door, Universal and Venus overhead storage all work with Classic XXI Panels

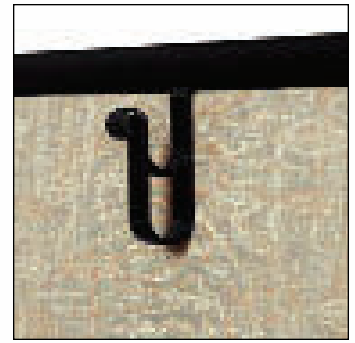
Classic XXI

The team workspace poses unique challenges for furniture designers: access with privacy; storage that doesn't sacrifice vital space; and mobility for impromptu meetings. Classic XXI rises to the occasion with products that strike a balance. Tempered glass panels and transaction counters facilitate communication even as fabric panels give a measure of privacy. Acoustical control can be just as important as privacy in a group space. That is why Classic XXI fabric acoustical panels contain an aluminum foil septum and four layers of fiberglass insulation. This means the only person who will hear your fingers tapping is you.

DETAILS:



Panel Cut-Out

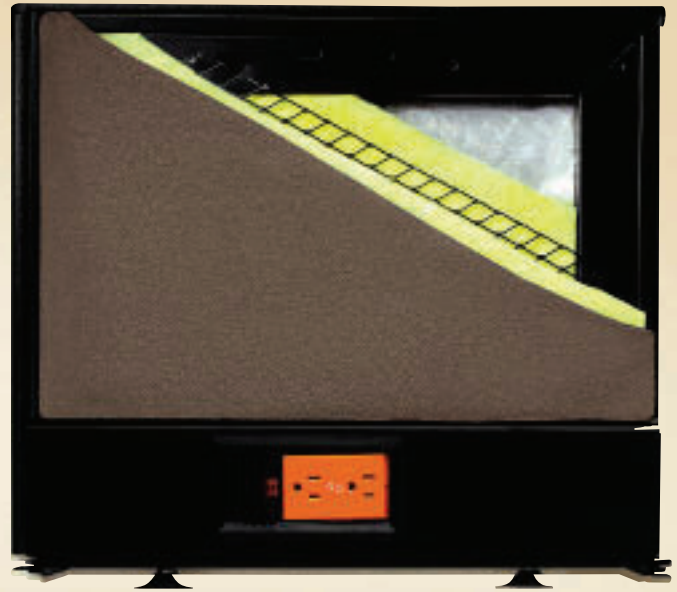


Coat Hook

Collaboration requires access. Unsightly power cables have their place with Classic XXI. Cables are run discreetly to receptacles keeping your workspace tidy.



- A table cut-out provides a channel for the adjoining panel end cap, giving the area a finished look even when the mobile worksurface is in use elsewhere.
- Slimline edge or round grommets provide cord management on the worksurface
- Optional coat hook/picture hanger coordinates with panel trim and attaches under the top cap of a panel



The steel frame and expanded metal skeleton of a Classic XXI panel core enclose acoustic barriers of fiberglass and aluminum foil for a combination of privacy and strength.

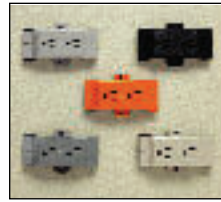
Office Furniture Solutions



Classic XXI

You share your office space, your job functions, and even your guest seating. Isn't it only natural that you would share your power source? Base and top feed electrical connections link clusters of workstations to floor, wall, or ceiling power sources within the building. You can control the number of these connections by choosing from a 422 8-wire, 622 10-wire, or 442 10-wire distribution system. With 1, 2, or 3 isolated ground circuits, 4 to 12 computers (and computer users) can be linked to a single external power source. Isn't that bright?

DETAILS:



Receptacles for the isolated ground circuit of the 422 8-wire system are orange, but the 3 convenience circuits are available in 5 colors to match the rest of the trim.



A cutaway of a panel raceway shows how duplex receptacles for an isolated ground circuit and a convenience circuit can be located within the same panel.



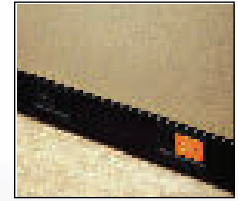
An ERP raceway cover is twice the size of a standard one to accommodate an additional raceway dedicated to data.



A base feed ties the building power supply at floor or wall level to the distribution system of the panels via 72" of flexible conduit.



Top feed conduits travel vertically within panels from the ceiling power supply to the raceway where they connect to the panel distribution system.



Standard raceways contain built-in wireways for data, allowing data faceplates to be mounted in line with receptacles.

Shape your environment to your requirements. Classic XXI Panels allow just that. Let your space be designed around your job function.





Teaming spaces promote interactive work environments yet Classic XXI creates private space for individual work as well.

Office Furniture Solutions

- Laminate or fabric covered worksurface support panels are available
- Tubular steel C-legs stabilize the worksurface while allowing improved air circulation
- A steel-end regular shelf with shelf dividers provides open storage
- Stackable panels can be added to existing panel runs
- Bottom open frame panels increase airflow or allows building-mounted systems to be accessible

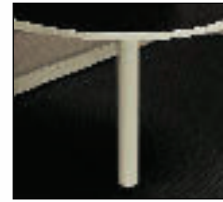
Classic XXI

If your projects tend to blanket every worksurface, let paper management tools move your supplies out of the way. Tool rails allow you to mount diagonal, vertical, or horizontal paper storage from your panel walls. A coordinating pencil cup, telephone caddy, and accessory tray keep even the smallest items right where you want them. For a more traditional take on small item storage, try the center drawer. It mounts easily beneath any worksurface and can be locked for added security. Kiosks offer a mixed media approach to storage, incorporating shelf units, lateral files and a locking closet all in one.

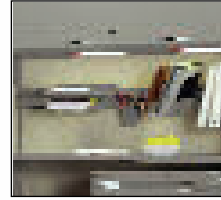
DETAILS:



Center Drawer



Steel Leg Post



Tool Rail



Tack Board

Organizing your environment has never been easier. Choose markerboards, kiosks, tool rails, etc. to personalize your space and create a home away from home.



- Worksurfaces can be equipped with center drawers which glide on smooth ball bearings
- Steel leg posts provide support to peninsula worksurfaces and maximize leg room
- Fabric covered tackboards mount between worksurfaces and overheads
- Half-glass panels couple the strength and acoustic features of standard panels



An optional translucent Rolling Screen Door provides a simple solution whether you are working at your desk, or you are away from the office.

Office Furniture Solutions

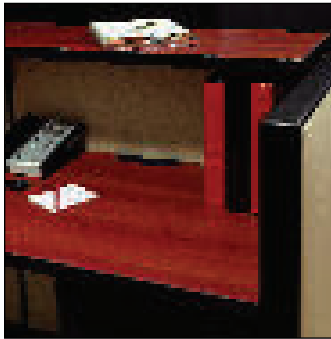


Classic XXI

Today your workspace is a junior executive semi-private, tomorrow it may be the big office. With Classic XXI, smart design features are built into every item, so you don't have to wait for comfort or style. A transaction counter creates concealed storage for the user. For direct illumination, task lights can be added to any overhead, while step-down panel heights are used to provide privacy where needed and admit natural light in any office setting.

With Classic XXI you really can have it all.

DETAILS:



Transaction Countertop



Task Lights

You can really appreciate your environment with Classic XXI Panels. Configure private managerial offices or reception stations with style and elegance.



- Task lights mount flush to the underside of overhead cabinets
- Countertops meet ADA requirements making them ideal for transactions with any user and client
- 9.5" of under countertop storage lets the user take advantage of under counter storage space



Full-height tempered glass panels are used in conjunction with panel doors to transform a workstation into an office with visual and acoustical privacy.

Office Furniture Solutions






OFG UNICOR
OFFICE
FURNITURE
GROUP

Working together to make a difference!

UNICOR
320 First Street N.W. Building 400
Washington, D.C. 20534
800.827.3168
unicor.gov/ofg | ofgsales@central.unicor.gov

 Printed on recycled paper.

CATP401

